

SIMON GREENWOOD

www.ScaleModelRailways.co.uk

O Gauge Leeds for Bassett Lowke Clockwork Class 72 Pickersgill 4-4-0 No 77 with 6 wheel Tender – Before Restoration by Simon Greenwood



O Gauge Leeds for Bassett Lowke Clockwork Class 72 Pickersgill 4-4-0 No 77 with 6 wheel Tender – Before Restoration by Simon Greenwood

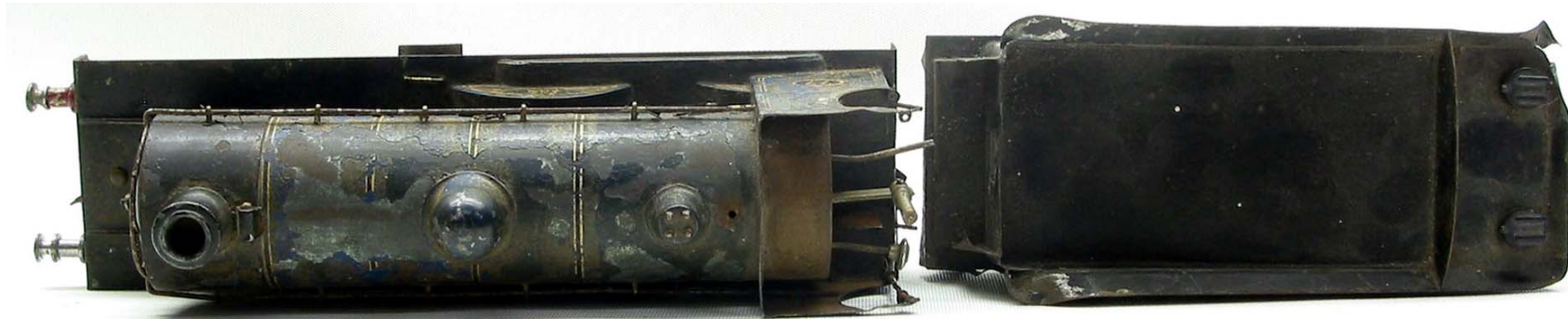


Plate work improvement/Repair/Replacement parts:

- The Cab Roof is a non-original. Fabricate and fit new Cab Roof sympathetic to the correct style.
- Straighten: Cab Sides, RH Tender Valance and Coal Rail. Rectify the damage in plate work to the corner top edge of the Coal Rail and Tender LH Side Frame and affix detached steps.

- Fabricate and fit replacements for missing: RH Cab steps, Whistle, 2 x Axle Boxes.
- Replace missing : Engine front coupling, Locomotive to Tender Coupling, Tender rear coupling, Tender buffers.

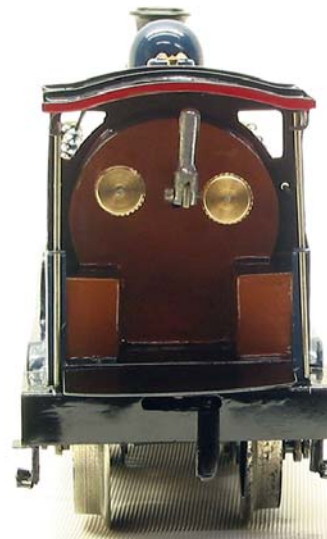
Livery Painting:

- Paint in Caledonian Railway Livery as No 77 in the style and finish of Leeds for Bassett Lowke

SIMON GREENWOOD

www.ScaleModelRailways.co.uk

O Gauge Leeds for Bassett Lowke Clockwork Class 72 Pickersgill 4-4-0 No 77 with 6 wheel Tender – After Restoration by Simon Greenwood



SIMON GREENWOOD

www.ScaleModelRailways.co.uk

O Gauge Leeds for Bassett Lowke Clockwork Class 72 Pickersgill 4-4-0 No 77 with 6 wheel Tender– After Restoration by Simon Greenwood

